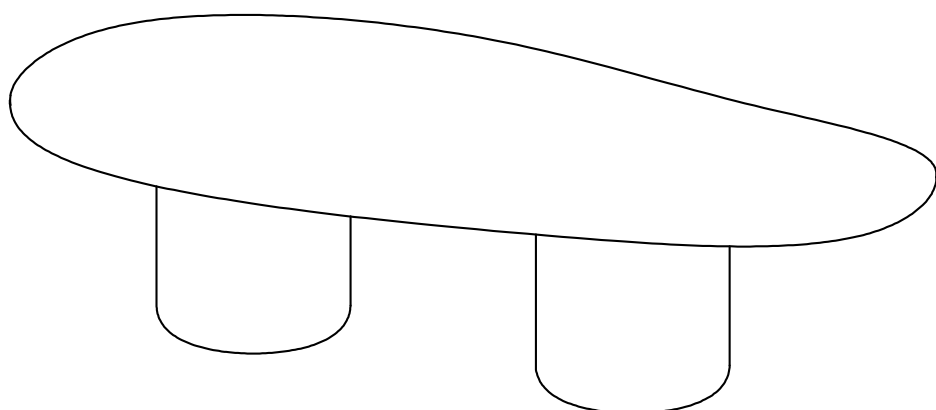


# Laghi

Dining Table II



# Laghi Dining Table II

---

## Finishes

### Lacquered Finishes

Lacquered High Gloss  
Lacquered Matt

250x110x74 cm 98"x 43"x 29"H  
270x110x74 cm 106"x 43"x 29"H  
290x110x74 cm 114"x 43"x 29"H

### POSSIBLE CUSTOMISATION

Width  
Depth  
Height

Any RAL lacquered finishes

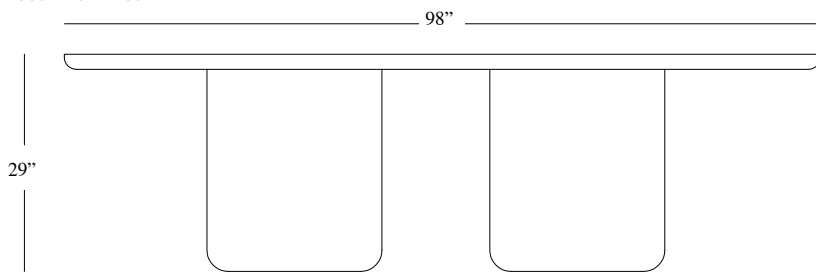


Base: Machine cut, hand finished MDF and plywood layers with heavy lacquer finish. Base is hollow and contains steel support structure. Painted steel support plate is attached to the support structure which supports the top. Top: Machine cut, hand finished MDF with heavy lacquer applied. Both parts available in matte and high gloss versions. Assembling required. Felt glides.

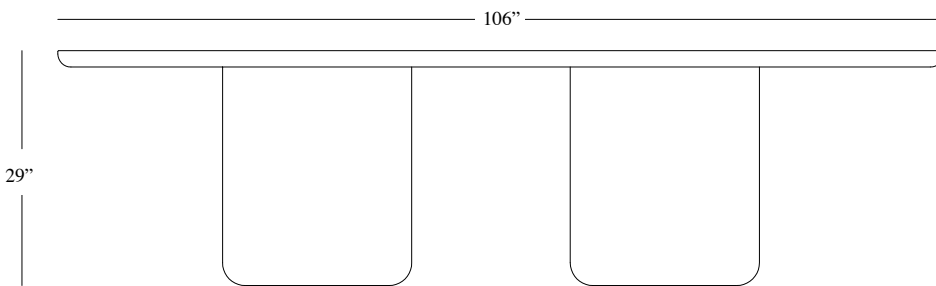
# Dimensions

---

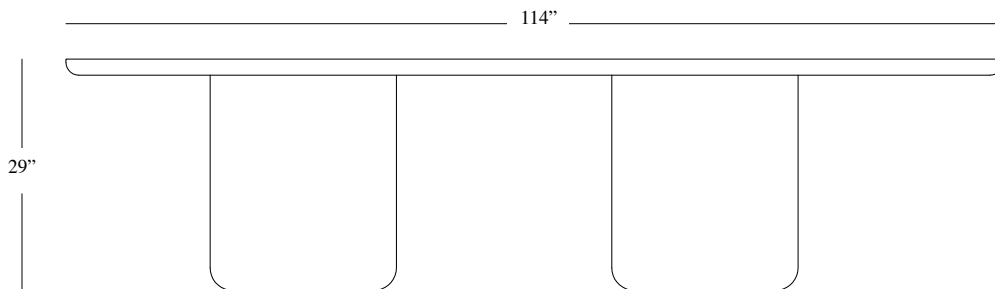
Cod. LAGHID250

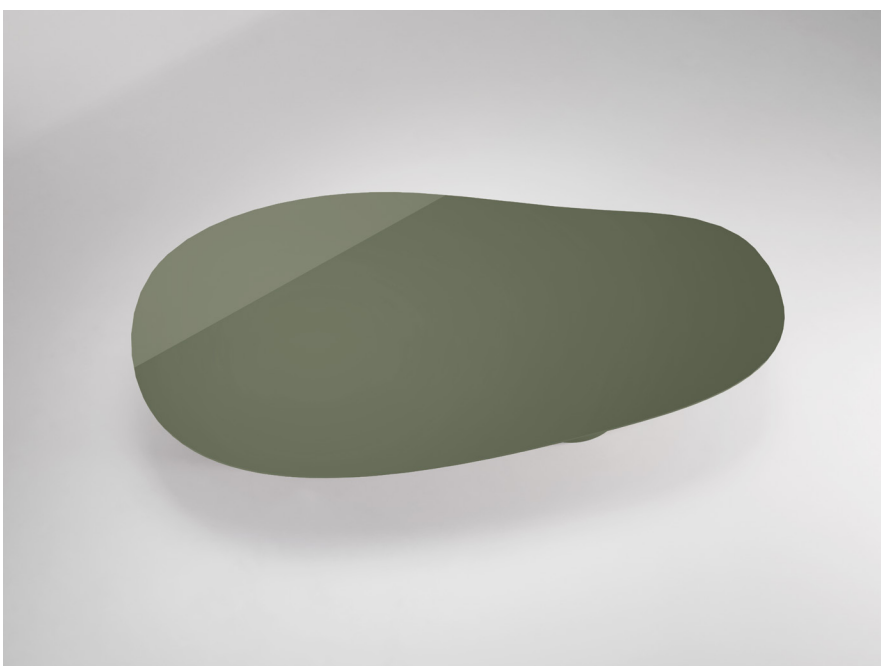


Cod. LAGHID270



Cod. LAGHID290





---

Lacquered

---

Maize



Strawberry Red



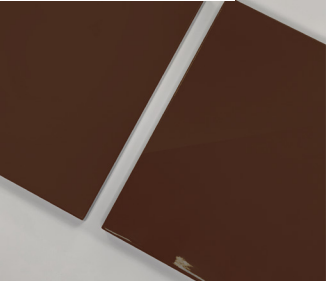
Red Violet



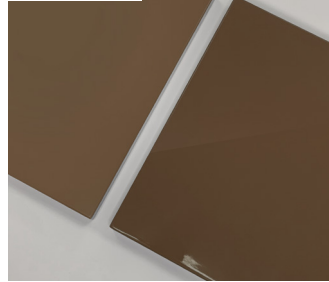
Pearl Orange



Mahogany Brown



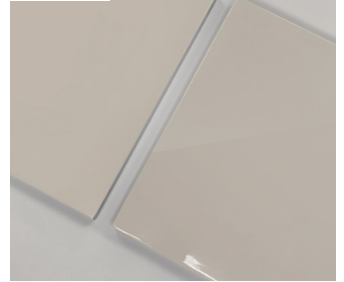
Moor Oak



Sabbia



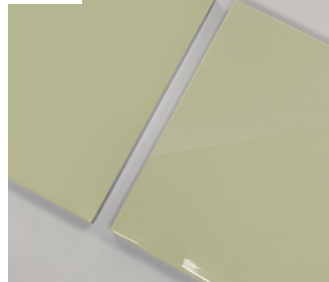
Tortora



Window Grey



Tiglio



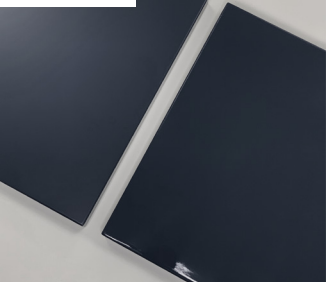
Velvet Green



Bottle Green



Steel Blue



Azure Blue



Bird Blue Grey



Cenere



Blue Cenere



Hazy Blue



Off White



Nude

