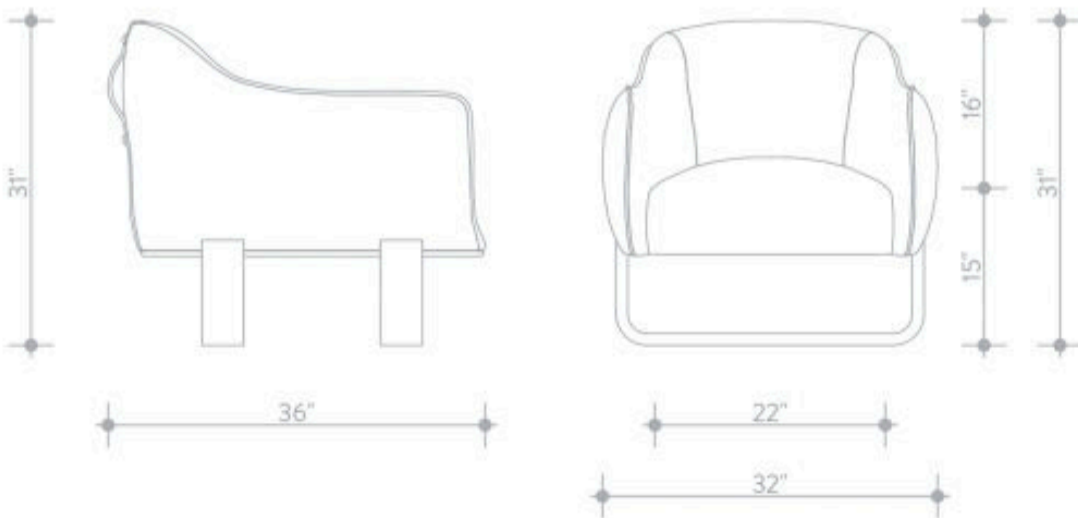


MB

COLLECTION

MARIE BURGOS COLLECTION

THE MILO ARM CHAIR



MATERIALS

Solid oak foot

STRUCTURE

Handcrafted wooden frame

FINISH

Variety of fabrics with leather handle. COM available

DIMENSIONS

Width: 32"
Depth: 36"
Height: 31"

MB

COLLECTION

MARIE BURGOS COLLECTION

PERFORMANCE VELVET



Fine - Nuage



Fine - Dune



Fine - Wood



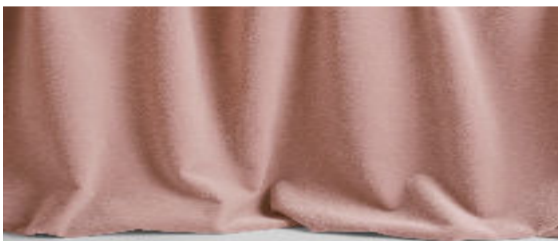
Fine - Safran



Fine - Dijon



Fine - Kiwi



Fine - Powder



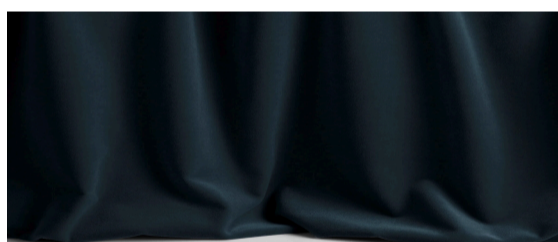
Fine - Wine



Fine - God Save The Queen



Fine - Duck



Fine - Méditerranée



Fine - Simple Black

PERFORMANCE CHENILLE VELVET



Freddo - Pearla



Freddo - Orzo



Freddo - Duna



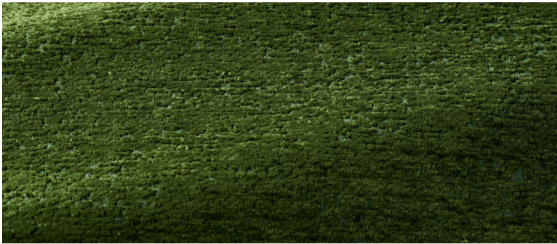
Freddo - Ambra



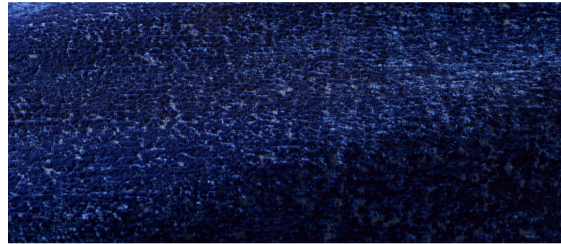
Freddo - Pesca



Freddo - Mirtillo



Freddo - Antica



Freddo - Marina



Freddo - Corteccia

PREMIUM BOUCLE WOOL



Opio - Naturel



Opio-Orzo



Opio- Ciottolo



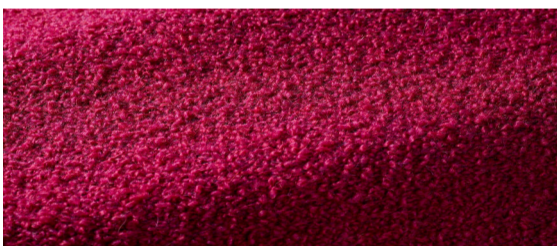
Opio- Ambra



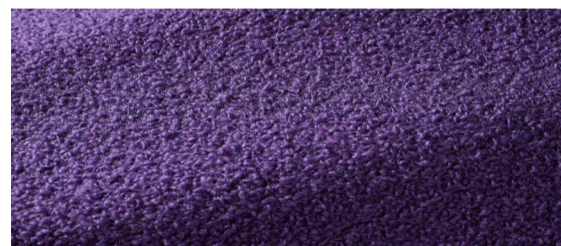
Opio- Kiwi



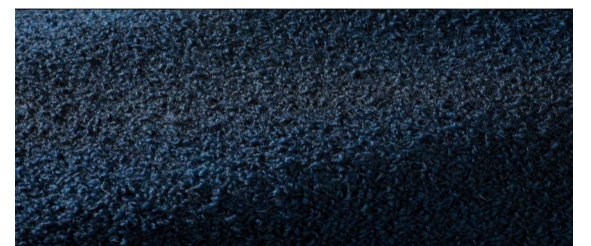
Opio- Eucalipto



Opio- Azalea

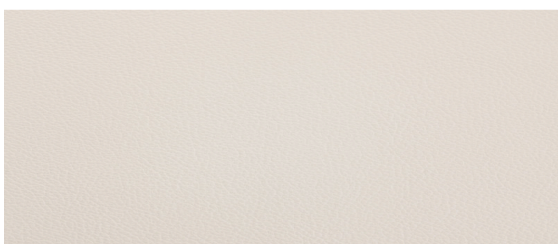


Opio- Porpora



Opio- Indaco

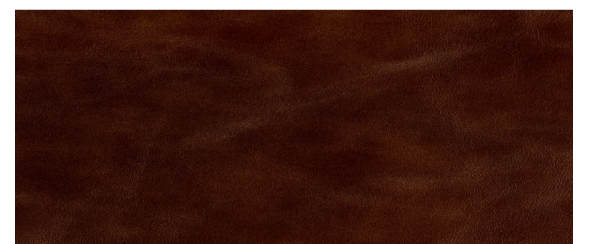
HANDLES LEATHERS



Shelly - White



Old English - Saddle



Belmont - Tobacco