



MILO BENCH

MATERIALS

Solid oak foot

STRUCTURE

Handcrafted wooden frame

FINISH

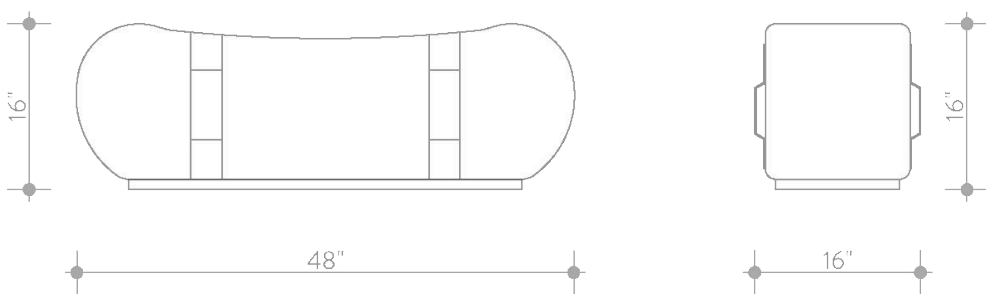
Variety of fabrics with leather handle. COM available

DIMENSIONS

Width: 48"

Depth: 16"

Height: 16"



MB

COLLECTION

MARIE BURGOS COLLECTION

PERFORMANCE VELVET



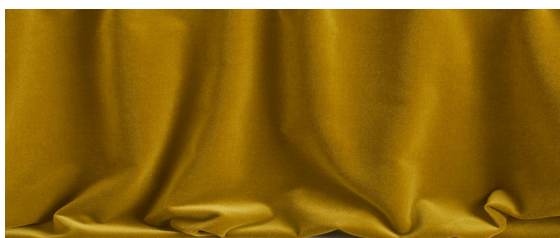
Fine - Nuage



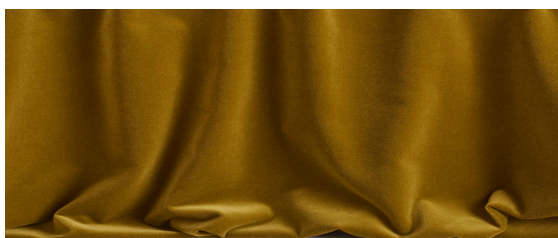
Fine - Dune



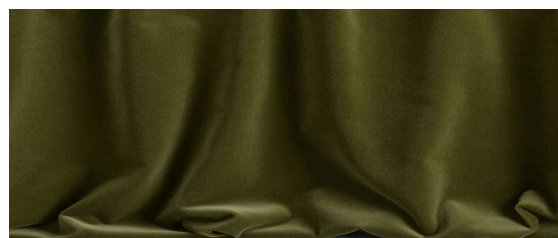
Fine - Wood



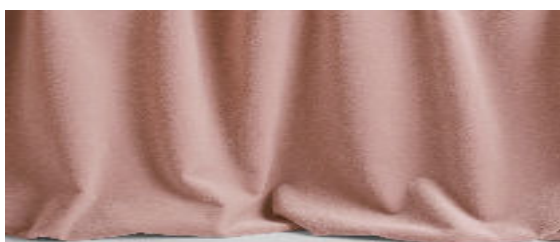
Fine - Safran



Fine - Dijon



Fine - Kiwi



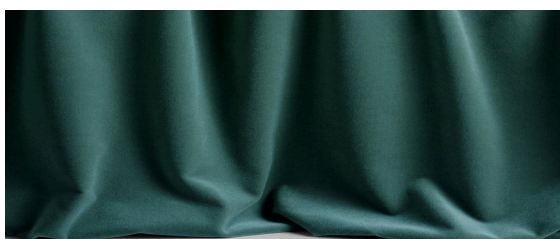
Fine - Powder



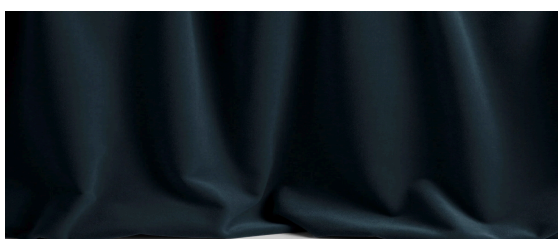
Fine - Wine



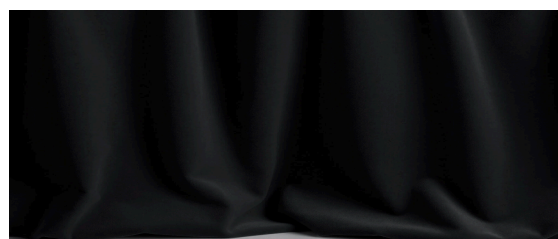
Fine - God Save The Queen



Fine - Duck



Fine - Méditerranée



Fine - Simple Black

PERFORMANCE CHENILLE VELVET



Freddo - Pearla



Freddo - Orzo



Freddo - Duna



Freddo - Ambra



Freddo - Pesca

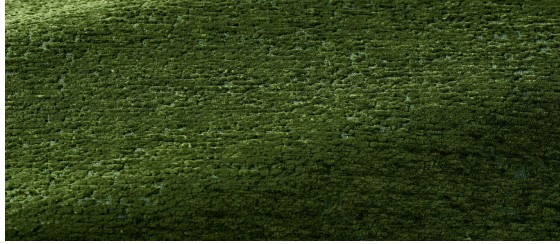


Freddo - Mirtillo

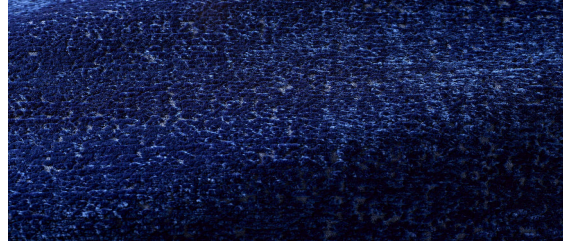
MB

COLLECTION

MARIE BURGOS COLLECTION



Freddo - Antica



Freddo - Marina



Freddo - Corteccia

PREMIUM BOUCLE WOOL



Opio - Naturel



Opio-Orzo



Opio- Ciottolo



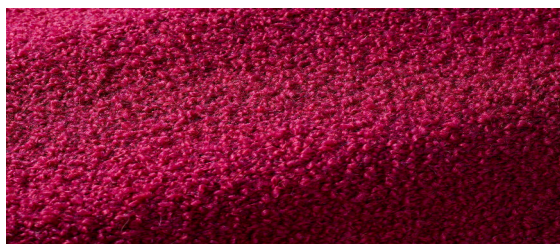
Opio- Ambra



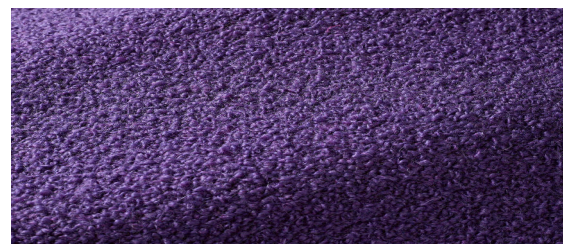
Opio- Kiwi



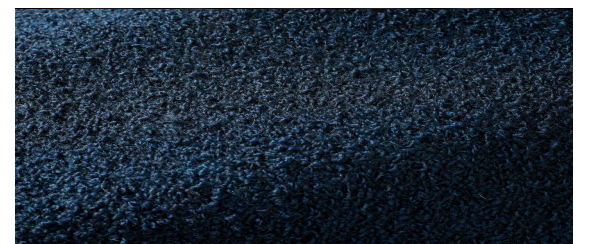
Opio- Eucalipto



Opio- Azalea

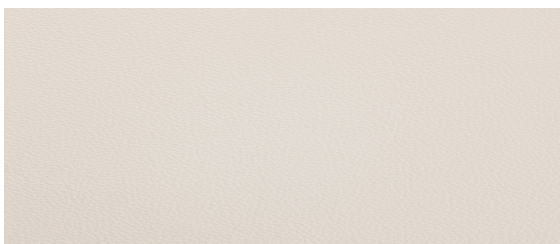


Opio- Porpora



Opio- Indaco

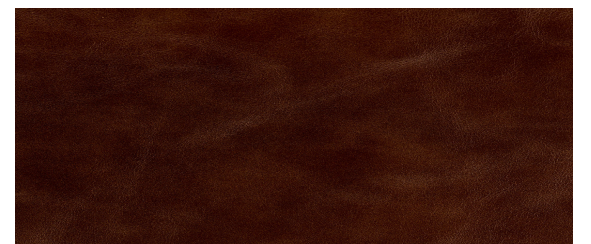
HANDLES LEATHERS



Shelly - White



Old English - Saddle



Belmont - Tobacco