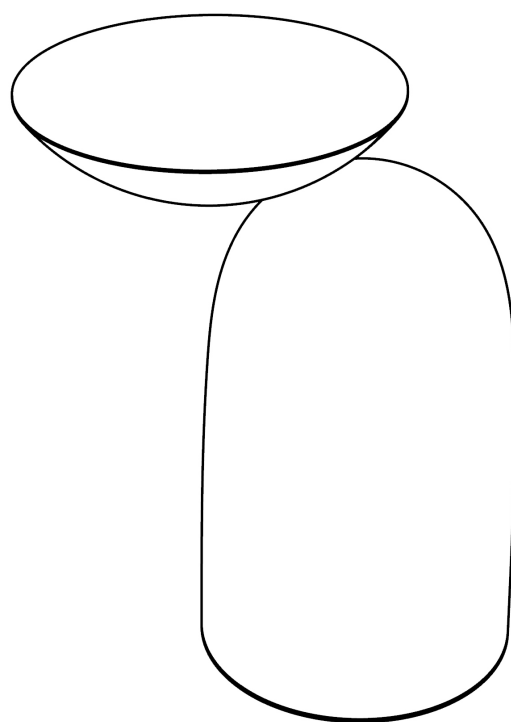


# Pingu

Side Table



# Pingu Side Table

## Finishes

### Metal Finishes

Satin Aluminium  
Satin Brass  
Satin Bronze  
Satin Champagne

Polished Aluminium  
Polished Brass  
Polished Bronze  
Polished Champagne

### Metal Lacquered

Off White  
Cenere  
Jet Black  
Blue Cenere

### Lacquered Finishes

Lacquered High Gloss  
Lacquered Matt

35x46x53 cm Top Dia 35 cm

14"x 18"x 21" Top Diam 14"



### POSSIBLE CUSTOMISATION

Any RAL metal finishes

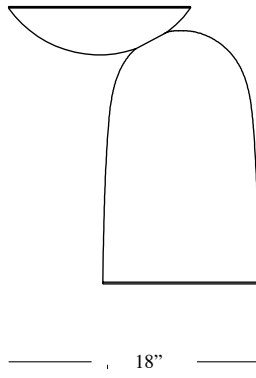
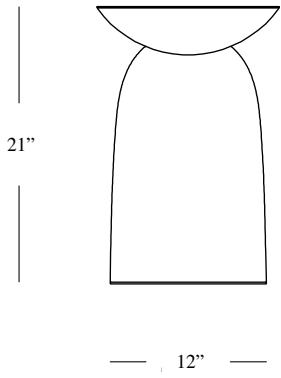
Any RAL lacquered finished

Machine cut layers of MDF glued and hand finished to achieve smooth surface. Finished with a heavy lacquer available in matte or high gloss. Central column counterweight in steel. Top: Machine cut, 2mm steel with radial brush finished in any of our range of metal finishes and glued in place. Felt glides. Comes assembled.

# Dimensions

---

Cod. PINGU





---

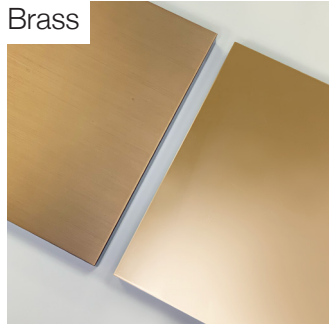
Metal: Satin / Polished

---

Aluminium



Brass



Bronze



Champagne



---

Metal Lacquered

---

Off White



Cenere



Jet Black



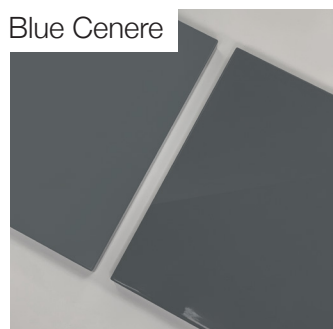
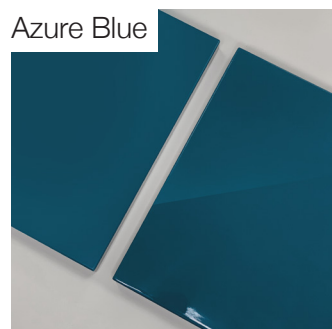
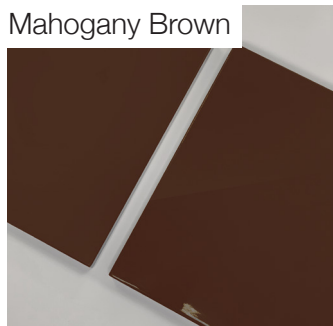
Blue Cenere



---

Lacquered

---



Colour samples are an indication only and do not replace the use of real samples when ordering, since it is impossible to guarantee a screen reproduction identical to the original.