

MB

COLLECTION

Tateyama Sofa

Tateyama is a conversational sofa characterized by its soft curves and unusual shape which encourages the users to engage with one another. It is both welcoming and comfortable. A gap has been carved out of the backrest, opening the sofa up to the rest of the room. The sofa is available with or without the incorporated side tables, which are supported by a continuous metal belt. The sofa can be upholstered in a number of different materials including COM. The metal element is available in a number of metal finishes including polished and satin variations.

Design by: Artefatto

98"W x 63"D x 28"H Seat height 16"1/2

*Metal finish and upholstery can be fully customized

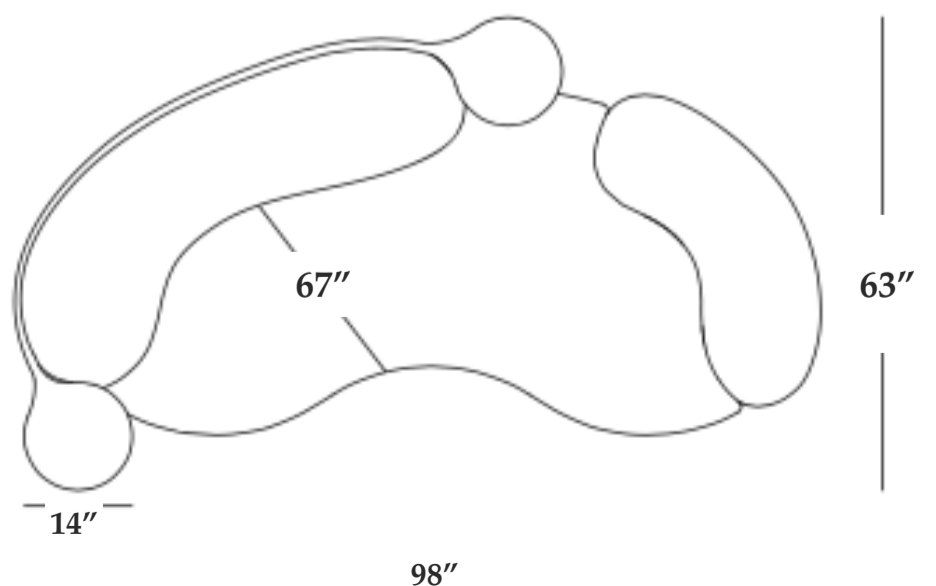


Upholstery:

- Velvet Fabric
- Boucle Fabric
- COM

Metal:

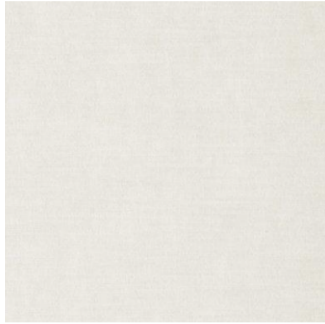
- Satin (Bronze, Brass, Champagne, Aluminium)



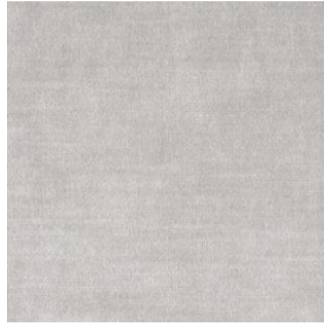
MB

COLLECTION

Fabrics



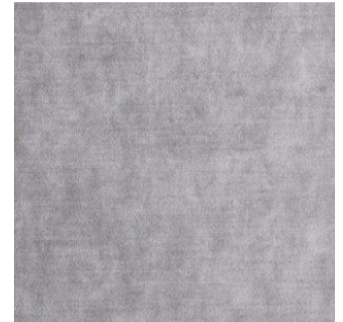
Velvet E50



Velvet E40



Velvet E00



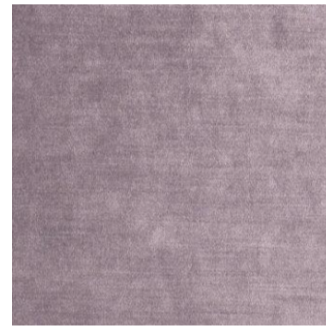
Velvet E53



Velvet E58



Velvet E13



Velvet E56



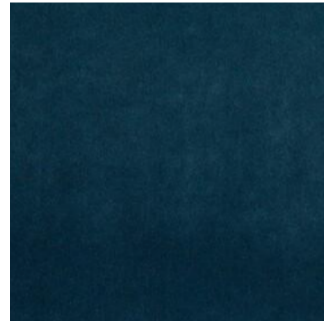
Velvet E22



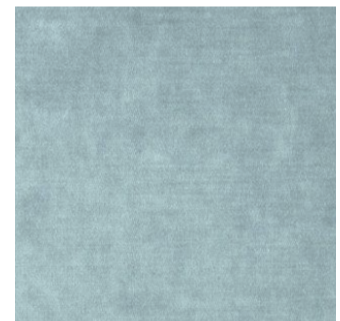
Velvet E38



Velvet E39



Velvet E43



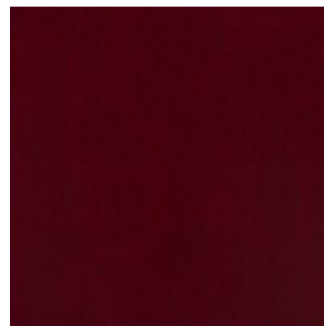
Velvet E41



Velvet E42



Velvet E15



Velvet E20



Velvet E11



Velvet E61



Velvet E04

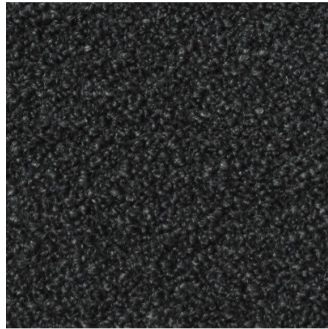


Velvet E26

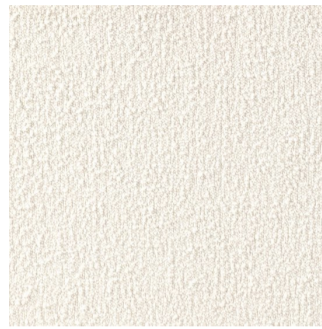
MB

COLLECTION

Fabrics



Boucle Dark Grey



Boucle Ivory

Metal



Polished Bronze



Brass Polished



Champagne Polished



Aluminium Polished



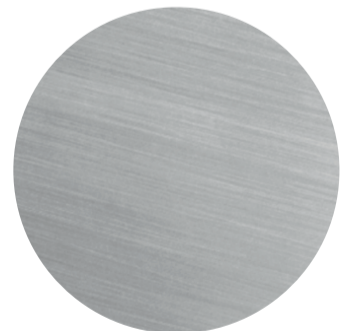
Satin Bronze



Brass Satin



Champagne Satin



Aluminium Satin